

How to reset BIOS passwords Dell Latitude D600

Napsal uživatel Tomáš Vízek

Středa, 04 Březen 2009 10:36 - Aktualizováno Pátek, 13 Březen 2009 22:46

The simplest way is to call Dell assist center, but they require to verify, you are an original and registered user. But there may be several legal reasons, why it may be a problem. For these reasons I come up with this little handbook.

To get rid of the unwanted and unknown password you need to reset CMOS to defaults, to do it, you have to short-circuit a specific chip on the motherboard.

You are going to need small screwdriver, Dell D600 notebook and paperclip or small scissors.

To reset the CMOS memory, where is the password stored, you have to short-circuit the chip containing CMOS. I would say the hardest part is to take apart the notebook. In Latitude D600 model the chip is located under the PCMCIA slot under the black plastic as can be seen on the first picture below. I will not describe here the procedure how to take the notebook into parts, I believe you can help yourselves.

Once you get to the proper chip you need to short-circuit its 3rd and 6th pins, as can be seen on the second picture below, while powering on the computer. It may seem, you need at least three hands, but don't worry I made it with my own two:).

After powering on there will be a non standard message on the screen, something about pushing Fn-X, that is a goog statement and everything turns on well. Now you can access BIOS by pushing F2 and set the password to whatever you like.

I hope this article was anywhere near to help you. Much more detailed one can be found [here](#) ,
Or

[PDF](#) made by same author as previous web with more Dell models. I remind, the PDF is NOT my work.



Enjoy and good luck!

How to reset BIOS passwords Dell Latitude D600

Napsal uživatel Tomáš Vízek

Středa, 04 Březen 2009 10:36 - Aktualizováno Pátek, 13 Březen 2009 22:46

Picture 1. *The chip containing CMOS, which has to be short-circuited is located under PCMCIA slot.*

How to reset BIOS passwords Dell Latitude D600

Napsal uživatel Tomáš Vízek

Středa, 04 Březen 2009 10:36 - Aktualizováno Pátek, 13 Březen 2009 22:46

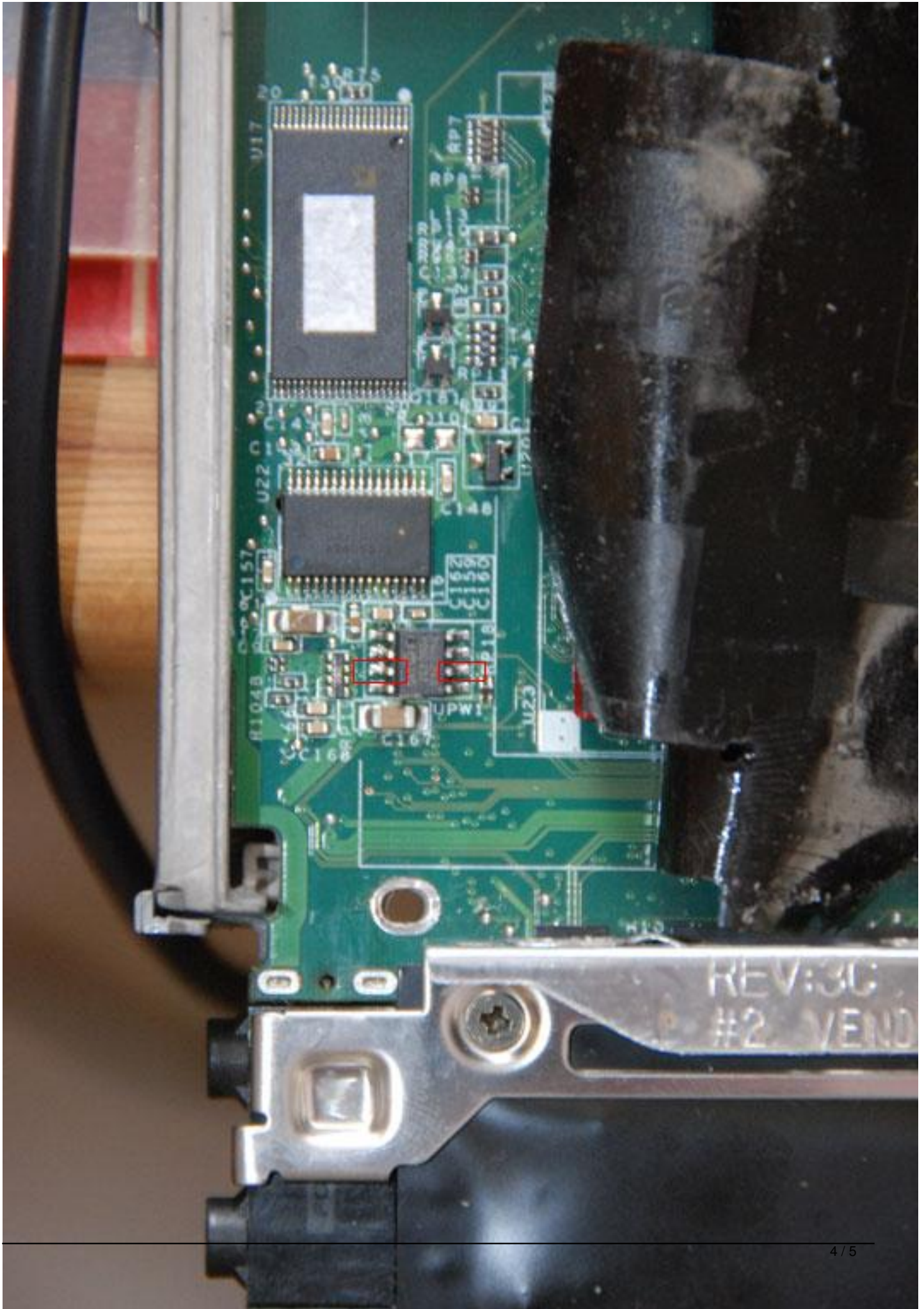


Picture 2. You have to short-circuit pins 3 and 6 while powering on the computer.

How to reset BIOS passwords Dell Latitude D600

Napsal uživatel Tomáš Vízek

Středa, 04 Březen 2009 10:36 - Aktualizováno Pátek, 13 Březen 2009 22:46



How to reset BIOS passwords Dell Latitude D600

Napsal uživatel Tomáš Vízek

Středa, 04 Březen 2009 10:36 - Aktualizováno Pátek, 13 Březen 2009 22:46
